

To arrange a viewing contact us
today on 01268 777400



High Road, Benfleet Guide price £700,000

Aspire Estate Agents are delighted to introduce this immaculate, modern and truly move-in ready five bedroom detached home with a dedicated study, integral garage and gated driveway providing parking for approximately five vehicles. The property sits within the highly regarded King John School catchment and is within walking distance of popular junior and nursery schools, making it ideal for family living.

A brand new composite Solidor front door opens to a stylish interior with Patina Oak Grey flooring and fresh décor throughout. Nest smart heating, argon-filled double glazing and new patio doors enhance comfort and efficiency, with attractive views across Boyce Hill Golf Club.

The ground floor offers a tiled porch, entrance hall with guest WC, bright lounge, separate dining room and a modern kitchen opening onto the garden. The integral garage is accessed from the kitchen and benefits from hot and cold water and an electric up-and-over door. Externally, the gated frontage provides ample off-street parking, while the rear garden features Hyperion composite decking, external power points and an outside tap.

Upstairs are four well-proportioned bedrooms, two with en suites, and a newly tiled family bathroom with Aqualisa power shower. The second floor adds a further double bedroom and a versatile study or home office with eaves storage.

Further highlights include newly fitted kitchen units with unused oven, hob and extractor, a Vaillant boiler and cylinder (approx. three years old) with magnetic filter, quality flooring and recent redecoration throughout.

The location is excellent, with Benfleet High Street and Tarpots close by for shops, cafés, pubs and award-winning restaurants, mainline rail services to London Fenchurch Street and Southend Central, easy access to

Ground Floor

Porch

Entrance Hall: 5.26m (17'3") x 1.72m (5'8")

WC

Lounge: 7.12m (23'4") x 3.24m (10'8")

Dining Room: 3.63m (11'11") x 3.19m (10'6")

Kitchen: 4.78m (15'8") x 2.40m (7'10")

Garage: 7.48m (24'6") x 4.15m (13'7")

First Floor

Bedroom: 4.95m (16'3") x 3.60m (11'10")

Ensuite

Bedroom: 3.82m (12'6") x 3.95m (13'0")

Ensuite

Bedroom: 3.95m (13'0") x 3.59m (11'9")

Bedroom: 2.60m (8'6") x 2.44m (8'0")

Bathroom

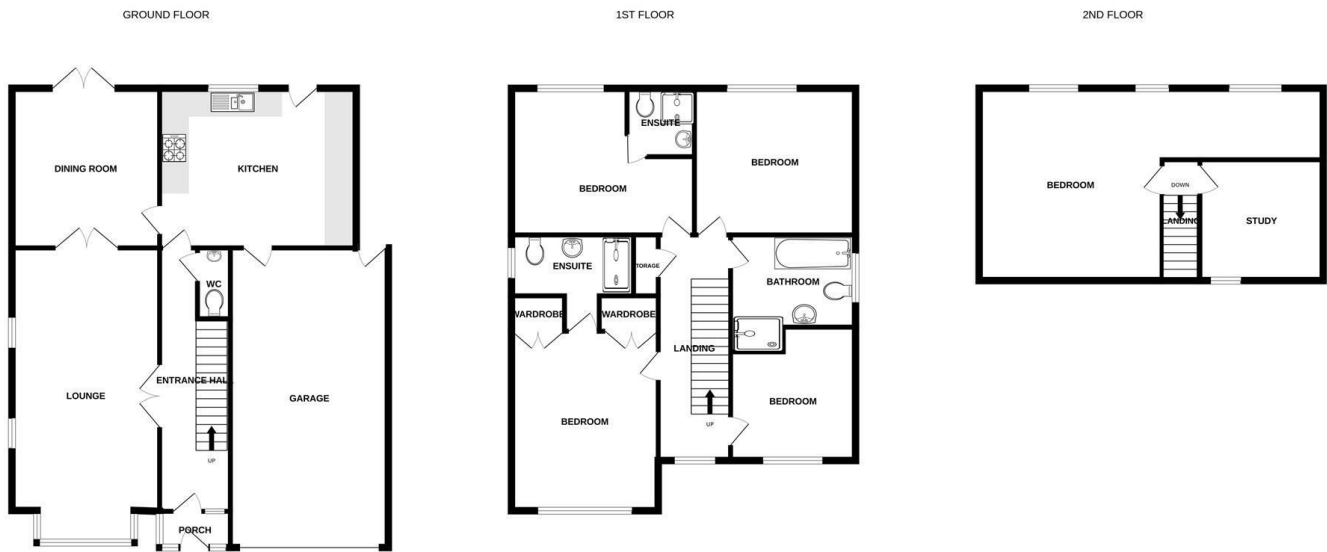
Landing/Storage

Second Floor

Bedroom (max): 8.47m (27'9") x 4.70m (15'5")

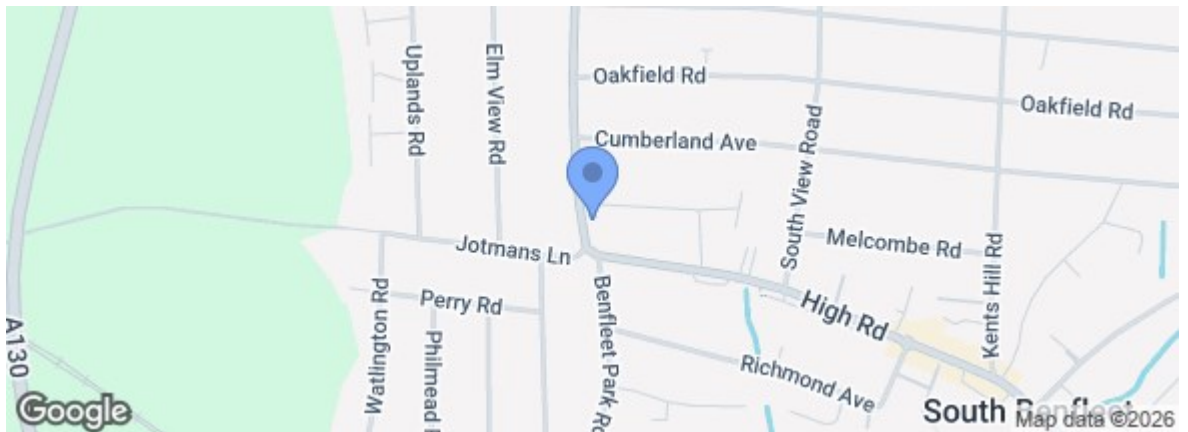
Study: 2.84m (9'4") x 2.79m (9'2")

Landing



Whilst every attempt has been made to ensure the accuracy of the floorplan contained here, measurements of doors, windows, rooms and any other items are approximate and no responsibility is taken for any error, omission or mis-statement. This plan is for illustrative purposes only and should be used as such by any prospective purchaser. The services, systems and appliances shown have not been tested and no guarantee as to their operability or efficiency can be given.
Made with Metropix ©2025

Energy Efficiency Rating		Current	Potential
Very energy efficient - lower running costs			
(92 plus) A			
(81-91) B			
(69-80) C		73	76
(55-68) D			
(39-54) E			
(21-38) F			
(1-20) G			
Not energy efficient - higher running costs			
England & Wales		EU Directive 2002/91/EC	
Environmental Impact (CO ₂) Rating		Current	Potential
Very environmentally friendly - lower CO ₂ emissions			
(92 plus) A			
(81-91) B			
(69-80) C			
(55-68) D			
(39-54) E			
(21-38) F			
(1-20) G			
Not environmentally friendly - higher CO ₂ emissions			
England & Wales		EU Directive 2002/91/EC	



Under the Property Misdescriptions Act 1991 we make every effort to ensure our sales details are accurate but they are a general outline and do not constitute any part of an offer or contract. Any services, equipment and fittings have not been tested and no warranty can be given as to their condition. We strongly recommend that all the information provided be verified by your advisors and in particular, measurements required for a specific purpose such as fitted furniture or carpets. Please tell us if you have any problems and members of our branches will help either over the phone or in person. A copy of our complaints procedure is available on request. The details are issued on the strict understanding that any negotiations in respect of the property named herein are conducted through Aspire Estate Agents.